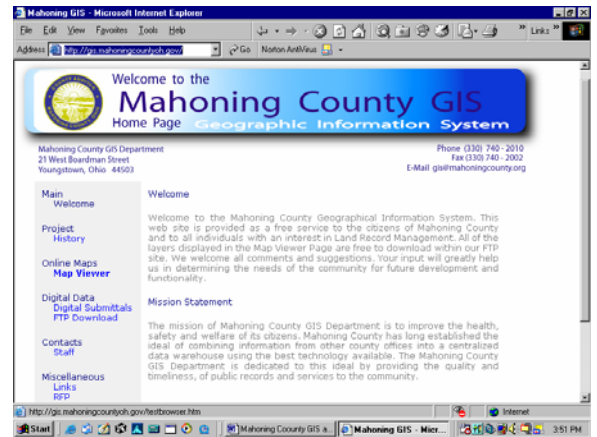


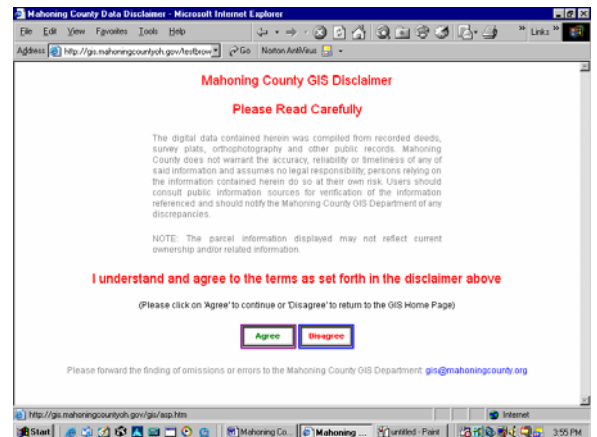
Mahoning County GIS Website: <http://gis.mahoningcountyoh.gov/>

- 1.) Select the website above to take you to the Mahoning County GIS Home Page:
- 2.) Next, select **Map Viewer** on the Mahoning County GIS Home Page.



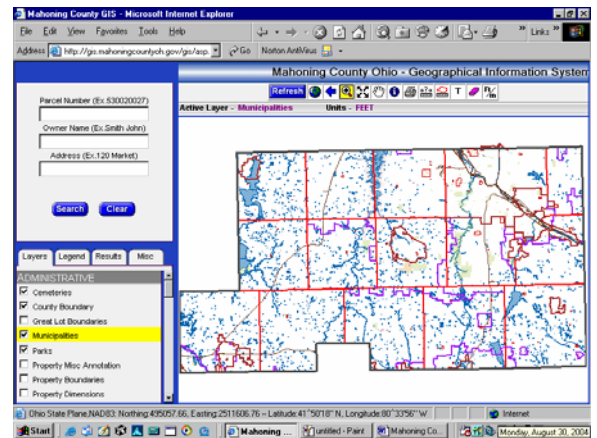
Selecting **Map Viewer** will take you to the Mahoning County GIS Disclaimer page:


- 3.) Next, click on the **Agree** button on the Mahoning County GIS Disclaimer page.

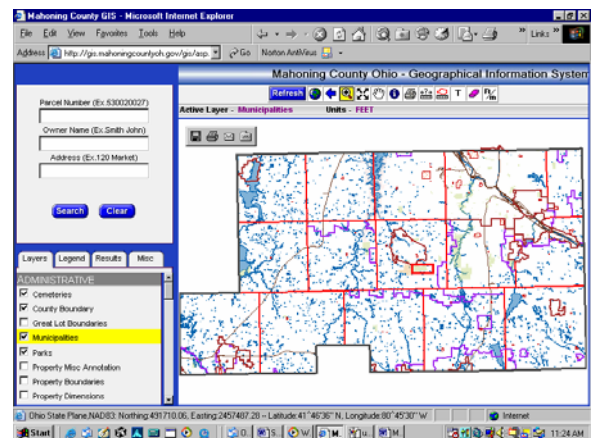


Clicking on the **Agree** button will then take you to the Mahoning County GIS website:

At this screen, you have access to the Mahoning County GIS map.



- 4.) You can zoom in to a particular location on the map by clicking on the  key and then, pointing at the location on the map, holding down the left mouse button and dragging away from this point to draw a box around the location you would like to zoom into (note the small red rectangle in the center of the map photo on the right) and then releasing the left mouse button.



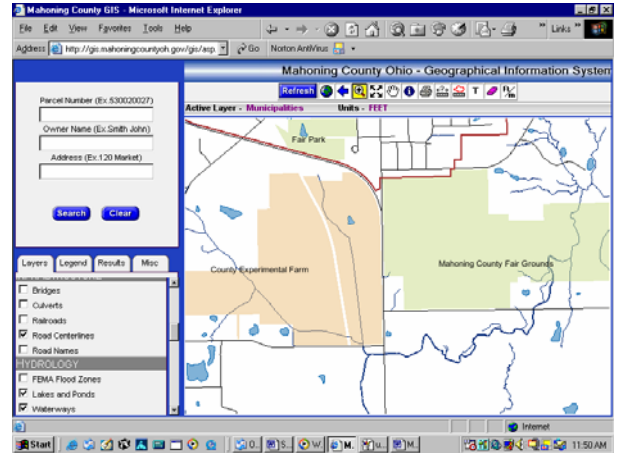
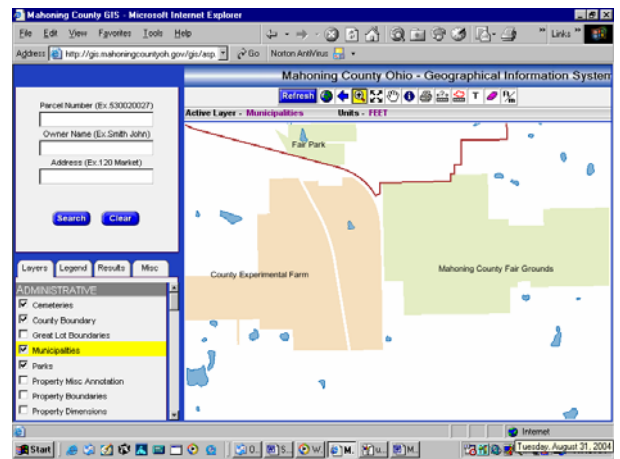
(over)

5.) In the photo on the right, you can see the result of the zoom selected in step 4:

There are many other features available on the Mahoning County GIS website – too many to go into detail in this document. However, two other features are important. And a third may be of interest to you.

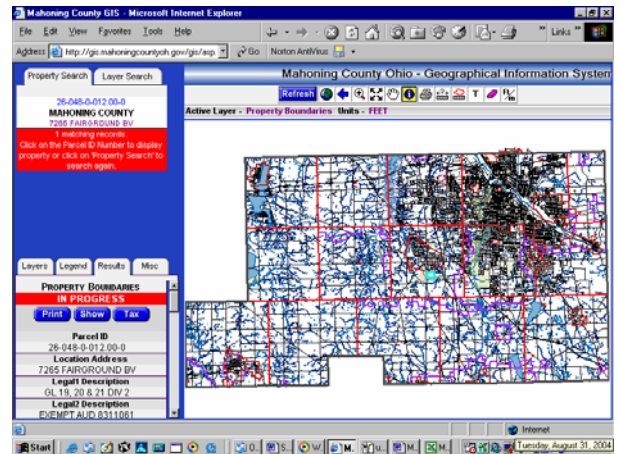
Layers –

The layers tab in the bottom left corner of the screen enables you to turn specific map layers on or off for the map you are generating. As an example by scrolling down the list of layers and selecting Road Centerlines and Waterways (by clicking in the box to the left of these layer names), then clicking on the Refresh button - **Refresh** - the previous map now looks like the map in the photo on the right:



Searches –

A search for a specific property can be performed by clicking on the Property Search tab in the upper left corner, then entering data in either the Parcel Number, Owner Name, or Address fields, and then clicking on the Search button - **Search**. The result of the search performed by entering 7265 FAIRGROUND BV in the address field is shown in the photo on the right.



The Tax Information Link –

After you have found your property, you can click on the Tax button - **Tax** - in the lower left corner. This will launch a link to the Mahoning County Auditor website, with tax information about your property. The result for 7265 FAIRGROUND BV is shown in the photo on the right.

